



# LPI C-2

Become a certified Linux Engineer

Linux Professional Institute (LPI) certified professionals do better at their jobs. They're more likely to get higher paying jobs, advance their career, have more choices, flexibility and skills portability. This is no surprise, given LPI that is the global certification standard and career support organization for open source professionals.



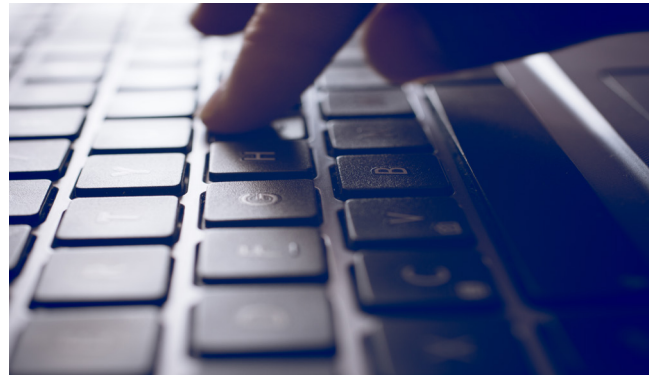
**Linux  
Professional  
Institute**

# Become a certified Linux Engineer

LPIC-2 is the second certification in Linux Professional Institute's multi-level Linux Professional certification program. LPIC-2 will validate your ability to design and administer mixed networks.

To become LPIC-2 certified, you must have an active LPIC-1 certification and pass both the 201 and 202 exams. The 201 and 202 exams are offered in English, French, German, Portuguese (Brazilian), Spanish (Modern), and Japanese.

To pass LPIC-2, you should be able to: Administer a small to medium-sized site, plan, implement, maintain, keep consistent, secure, and troubleshoot a small mixed (MS, Linux) network, including a LAN server (Samba, NFS, DNS, DHCP, client management), Internet Gateway (firewall, VPN, SSH, web cache/proxy) and Internet Server (web server and reverse proxy, FTP server, mail).



Successful candidates will be able to supervise assistants, as well as advise management on automation and purchases.

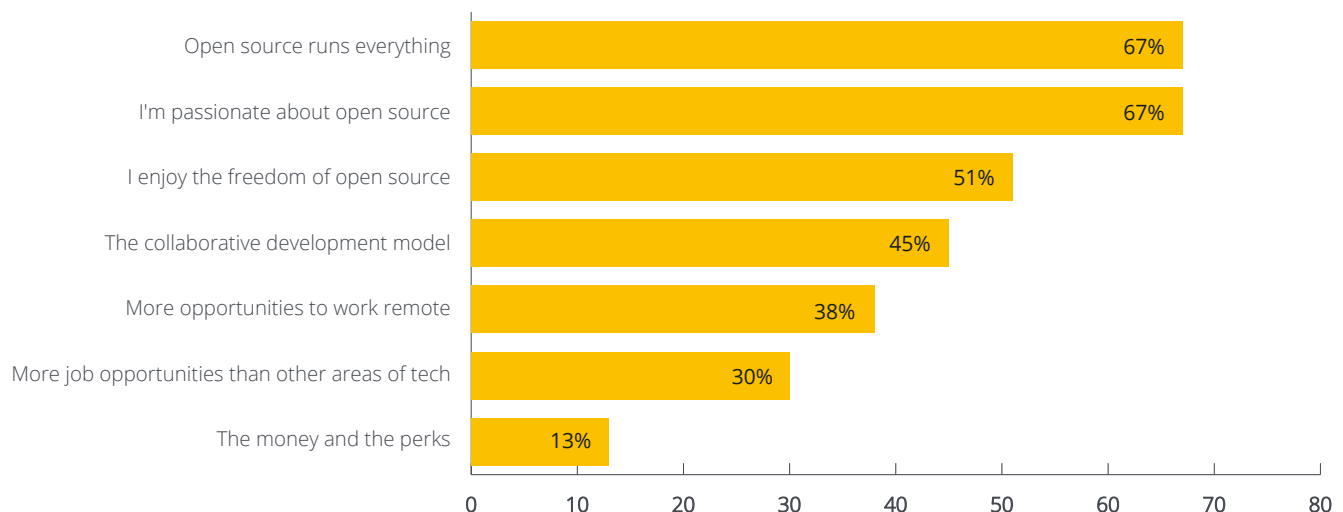
To become LPIC-2 certified, you must pass both the LPIC-2 201 and LPIC-2 202 exams.

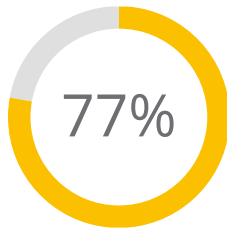
## Jobs you can get with your LPIC-2 certification:

- Network Administrator
- Enterprise Server Engineer
- QA Engineer
- Systems Programmer
- Application Programmer
- Database Administrator (DBA)
- Programmer / Analyst
- System Architect

## Why professionals choose careers in open source

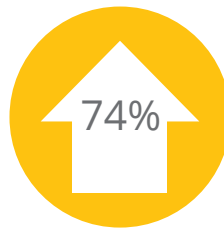
- Open Source Jobs Report 2020





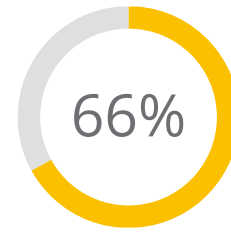
77% of those who were certified received a pay increase within 6 months.

- Pearson VUE Value of IT Certification Report 2021



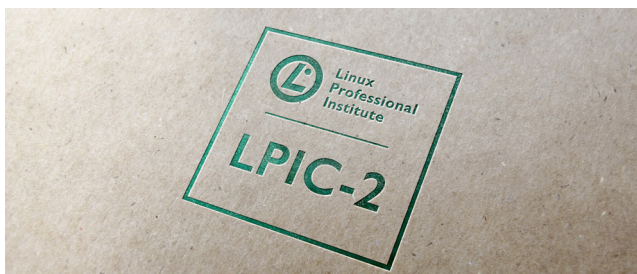
74% of hiring managers surveyed report a willingness to pay for certifications, up significantly from 55% in 2018.

- Open Source Jobs Report 2020



66% of IT managers said employees with IT certifications produce higher quality work.

- Pearson VUE Value of IT Certification Employer Report 2021



### LPIC-2 201 exam Topics



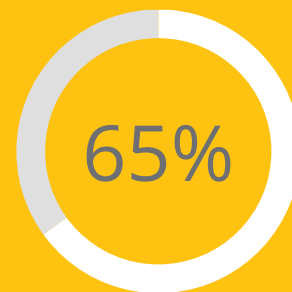
- 200: Capacity Planning
- 201: Linux Kernel
- 202: System Startup
- 203: Filesystem and Devices
- 204: Advanced Storage Device Administration
- 205: Networking Configuration
- 206: System Maintenance

### LPIC-2 202 exam topics

- 207: Domain Name Server
- 208: HTTP Services
- 209: File Sharing
- 210: Network Client Management
- 211: E-Mail Services
- 212: System Security

## Take the guesswork out of what's on the exam

Our exam objectives show you what topics you can expect to find on the exams, as well as the relative importance of those topics. No matter which study resources you decide to use when preparing for your Linux Professional Institute (LPI) exams, reviewing the individual exam objectives should be at the core of any study plan.



The certifications that gained the most value over the past three months in the sysadmin space were all Linux-related: LPIC-2, LPIC-3 and Red Hat Certified Systems Administrator.

- Foote Research Group IT Skill Certs Pay Data Trend 2021



# Hiring managers are looking for open source professionals

- Open Source Jobs Report 2020



81% of hiring managers say hiring open source talent is a priority



56% of hiring managers plan to increase their hiring of open source professionals in the next six months



57% of hiring managers stated that hiring certified professionals is a priority, up significantly from 47% in 2018



80% of employers now report that they provide online training courses for employees to learn open source software



62% of hiring managers are more likely to hire someone with a certification, up from 47% in 2018



93% of hiring managers report difficulty finding sufficient talent with open source skills

## Linux Professional Institute (LPI) certification doesn't claim you have the skills, it proves them

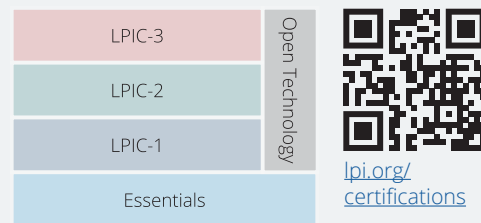
Verified credentials get you to the top of the resume pile and on recruiter hot lists. Best of all, it's the quickest way through the HR firewall.

LPI's vendor-neutral certifications show open source software's versatility. When you pass these certifications, you won't be limited to one particular vendor technology, but will be capable of working with multiple open source technologies – mirroring the environments you will experience on the job.

Because we provide detailed exam objectives, you can spend your time preparing for the exam efficiently. As well, our certifications are valid for 5 years; longer than most.

LPI has certified professionals worldwide. It's the internationally recognized standard, which means you have a recognized skill set that is in demand throughout the world, and a career that can travel with you.

## View summary of LPI exams



## LPI is a non profit organization

Linux Professional Institute (LPI) is the global certification standard and career support organization for open source professionals. With more than 200,000 exam holders, it's the world's first and largest vendor-neutral Linux and open source certification body. LPI has certified professionals in over 180 countries, delivers exams in multiple languages, and has hundreds of training partners.

Our purpose is to enable economic and creative opportunities for everybody by making open source knowledge and skills certification universally accessible.

For more information on how to get LPIC-2 certified, find training materials and instructors, or to purchase an exam voucher, visit [lpi.org](https://lpi.org).



**Linux  
Professional  
Institute**